

Q1 2018 PROFILE OF YOUNG PEOPLE IN DETENTION

MORE DATA AND STATISTICS AVAILABLE ON OBERSTOWN.COM

92

YOUNG PEOPLE IN DETENTION

POPULATION 

52 WERE ON DETENTION ORDERS **40** WERE ON REMAND ORDERS **88** MALE **4** FEMALE

- ▶ First time in detention for **28** young people
- ▶ **41%** of young people were 16 years old upon admission and 30% came from Dublin
- ▶ **29%** of young people had a sentence of between 2 and 12 months

MENTAL HEALTH

- ▶ **52%** of the 92 young people in detention had a mental health need
- ▶ **27%** were prescribed medication for a mental health concern (almost exclusively for ADHD)



FAMILY

- ▶ **36%** of young people had suffered the loss of one or both parents either through death, imprisonment or no long-term contact
- ▶ **22%** of were members of the Traveller community

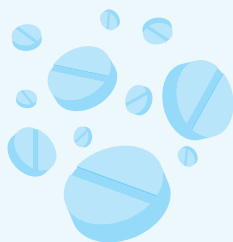


DRUGS/ALCOHOL

72% of young people were considered to have substance misuse problems

Of those:

- ▶ **38** were identified as having a mental health problem
- ▶ **23** were in care
- ▶ **34** exhibited challenging behaviour



CARE

- ▶ **40%** of young people were either in care or had significant involvement with Tusla
- ▶ Of those, **13** young people had multiple care placements
- ▶ **36%** had a social worker



EDUCATION

- ▶ **49%** of young people were not engaged in education prior to detention
- ▶ **20%** of young people had a diagnosed learning disability



RISK

- ▶ **20%** of young people were considered to be at risk of abuse or neglect
- ▶ **47%** of young people in detention demonstrated challenging behaviour
- ▶ There were concerns about self-harm in respect of **23%** of young people



Produced by
OBERSTOWN CHILDREN DETENTION CAMPUS